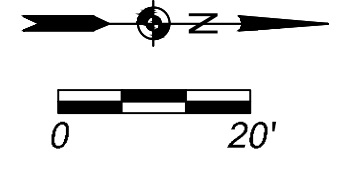


SW Brandywine Court (Alignment Control)				
ID	Begin Station	End Station	Begin Coordinates	End Coordinates
L1	71+00.00	76+00.00	N: 251859.04 E: 1947635.58	N: 252358.85 E: 1947621.92

- LEGEND**
- 4" Concrete Sidewalk (0.6% to <5.0%)
 - Sidewalk Turning Space (0.6% to 1.5%)
 - Ramp (5.0% to 8.0% Typ.)
 - Special Shaping Area
 - 2" Mill & 2" Asphalt Overlay
 - 8" Concrete Pavement
 - 6" Concrete Driveway
 - Asphalt Pavement Patching



SBB PROJ. NO. 25-055

NO.	DATE	REVISION	BY	APPD

DRAWN BY: L. O'CONNOR
 APP'D BY: B. AUSTIN
 FIELD BOOKS: -
 SURVEYED BY: SBB ENG.

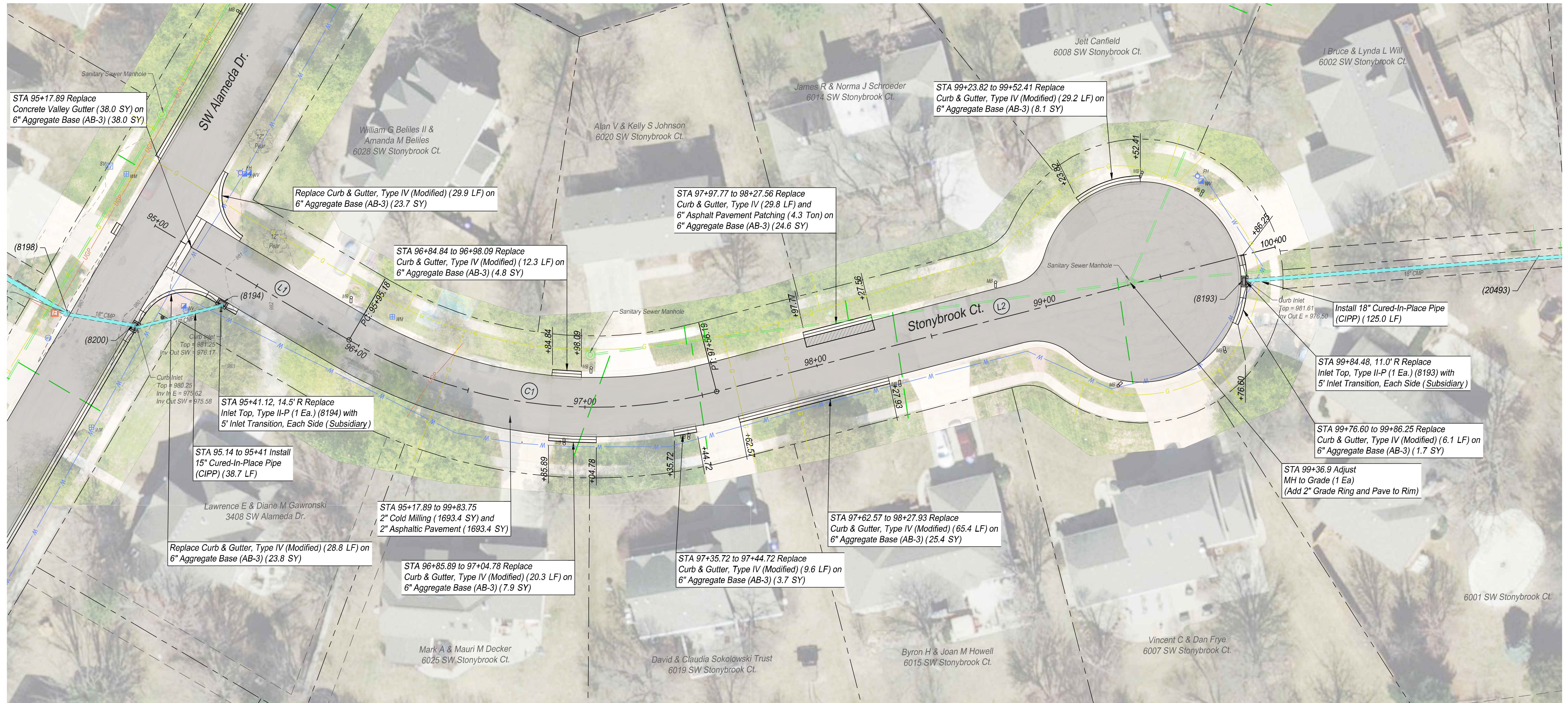


Shadywood West
 Neighborhood Project,
 841098.05 and 501125.03

SW Brandywine Court

DATE: 3/17/2026
 SHEET: 13 OF 34
 PROJ.: 841098.05
 501125.03

File Location: X:\11 SBE Drawings\10-2025-055-Shadywood West\Drawings\Design\Street Plans\25-055 SW Brandywine Court.dwg | Plot Date: 3/17/2026 4:46:28 PM | Last Saved: 3/13/2026 9:52:29 AM | Dbaustin



STA 95+17.89 Replace Concrete Valley Gutter (38.0 SY) on 6" Aggregate Base (AB-3) (38.0 SY)

Replace Curb & Gutter, Type IV (Modified) (29.9 LF) on 6" Aggregate Base (AB-3) (23.7 SY)

STA 97+97.77 to 98+27.56 Replace Curb & Gutter, Type IV (Modified) (29.8 LF) and 6" Asphalt Pavement Patching (4.3 Ton) on 6" Aggregate Base (AB-3) (24.6 SY)

STA 99+23.82 to 99+52.41 Replace Curb & Gutter, Type IV (Modified) (29.2 LF) on 6" Aggregate Base (AB-3) (8.1 SY)

STA 96+84.84 to 96+98.09 Replace Curb & Gutter, Type IV (Modified) (12.3 LF) on 6" Aggregate Base (AB-3) (4.8 SY)

STA 95+41.12, 14.5' R Replace Inlet Top, Type II-P (1 Ea.) (8194) with 5' Inlet Transition, Each Side (Subsidiary)

STA 95.14 to 95+41 Install 15" Cured-In-Place Pipe (CIPP) (38.7 LF)

Replace Curb & Gutter, Type IV (Modified) (28.8 LF) on 6" Aggregate Base (AB-3) (23.8 SY)

STA 95+17.89 to 99+83.75 2" Cold Milling (1693.4 SY) and 2" Asphaltic Pavement (1693.4 SY)

STA 96+85.89 to 97+04.78 Replace Curb & Gutter, Type IV (Modified) (20.3 LF) on 6" Aggregate Base (AB-3) (7.9 SY)

STA 97+35.72 to 97+44.72 Replace Curb & Gutter, Type IV (Modified) (9.6 LF) on 6" Aggregate Base (AB-3) (3.7 SY)

STA 97+62.57 to 98+27.93 Replace Curb & Gutter, Type IV (Modified) (65.4 LF) on 6" Aggregate Base (AB-3) (25.4 SY)

Install 18" Cured-In-Place Pipe (CIPP) (125.0 LF)

STA 99+84.48, 11.0' R Replace Inlet Top, Type II-P (1 Ea.) (8193) with 5' Inlet Transition, Each Side (Subsidiary)

STA 99+76.60 to 99+86.25 Replace Curb & Gutter, Type IV (Modified) (6.1 LF) on 6" Aggregate Base (AB-3) (1.7 SY)

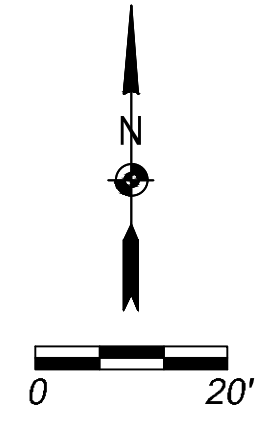
STA 99+36.9 Adjust MH to Grade (1 Ea.) (Add 2" Grade Ring and Pave to Rim)

SW Stonybrook Court (Alignment Control)

ID	Begin Station	End Station	Begin Coordinates	End Coordinates	Curve Info
L1	95+00.00	95+95.18	N: 252794.25 E: 1947300.43	N: 252745.94 E: 1947382.44	
C1	PC: 95+95.18	PT: 97+56.19	PC: N: 252745.94 E: 1947382.44	PT: N: 252724.14 E: 1947537.82	L: 161.01' T: 84.92' R: 204.89" Δ: 45°01'30" C: 156.90'
L2	97+56.19	100+00.00	N: 252724.14 E: 1947537.82	N: 252785.29 E: 1947773.83	

LEGEND

- 4" Concrete Sidewalk (0.6% to <5.0%)
- Sidewalk Turning Space (0.6% to 1.5%)
- Ramp (5.0% to 8.0% Typ.)
- Special Shaping Area
- 2" Mill & 2" Asphalt Overlay
- 8" Concrete Pavement
- 6" Concrete Driveway
- Asphalt Pavement Patching



SBB PROJ. NO. 25-055

NO.	DATE	REVISION	BY	APPD

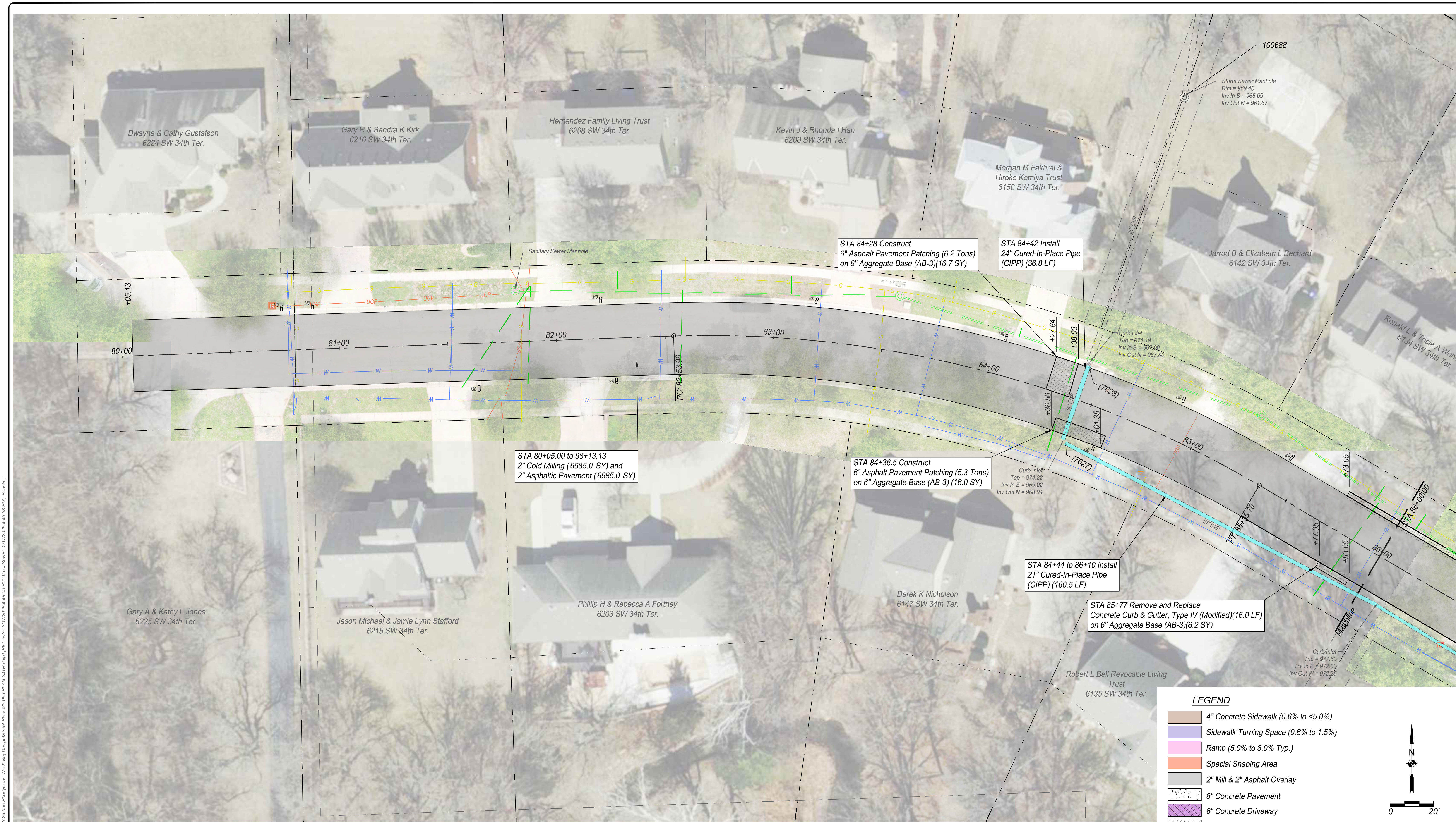
DRAWN BY: L. O'CONNOR
 APP'D BY: B. AUSTIN
 FIELD BOOKS: -
 SURVEYED BY: SBB ENG.



Shadywood West
 Neighborhood Project,
 841098.05 and 501125.03

SW Stonybrook Court

DATE: 3/17/2026
 SHEET: 14 OF 34
 PROJ.: 841098.05
 501125.03



File Location: X:\11 SBB Drawings\10-2022\25-055-Shadywood West\Drawings\Street Plans\25-055 SW 34th Ter.dwg | Plot Date: 3/17/2026 4:46:06 PM | Last Saved: 2/17/2026 4:43:38 PM | Baustin

NO.	DATE	REVISION	BY	APP'D

DRAWN BY: L. O'CONNOR
 APP'D BY: B. AUSTIN
 FIELD BOOKS: -
 SURVEYED BY: SBB ENG.


TOPEKA
 Public Works
 ENGINEERING
 620 SE MADISON St. • 2nd Floor • TOPEKA, KS 66607
 Phone: (785) 368-3842 • Fax: (785) 368-3881

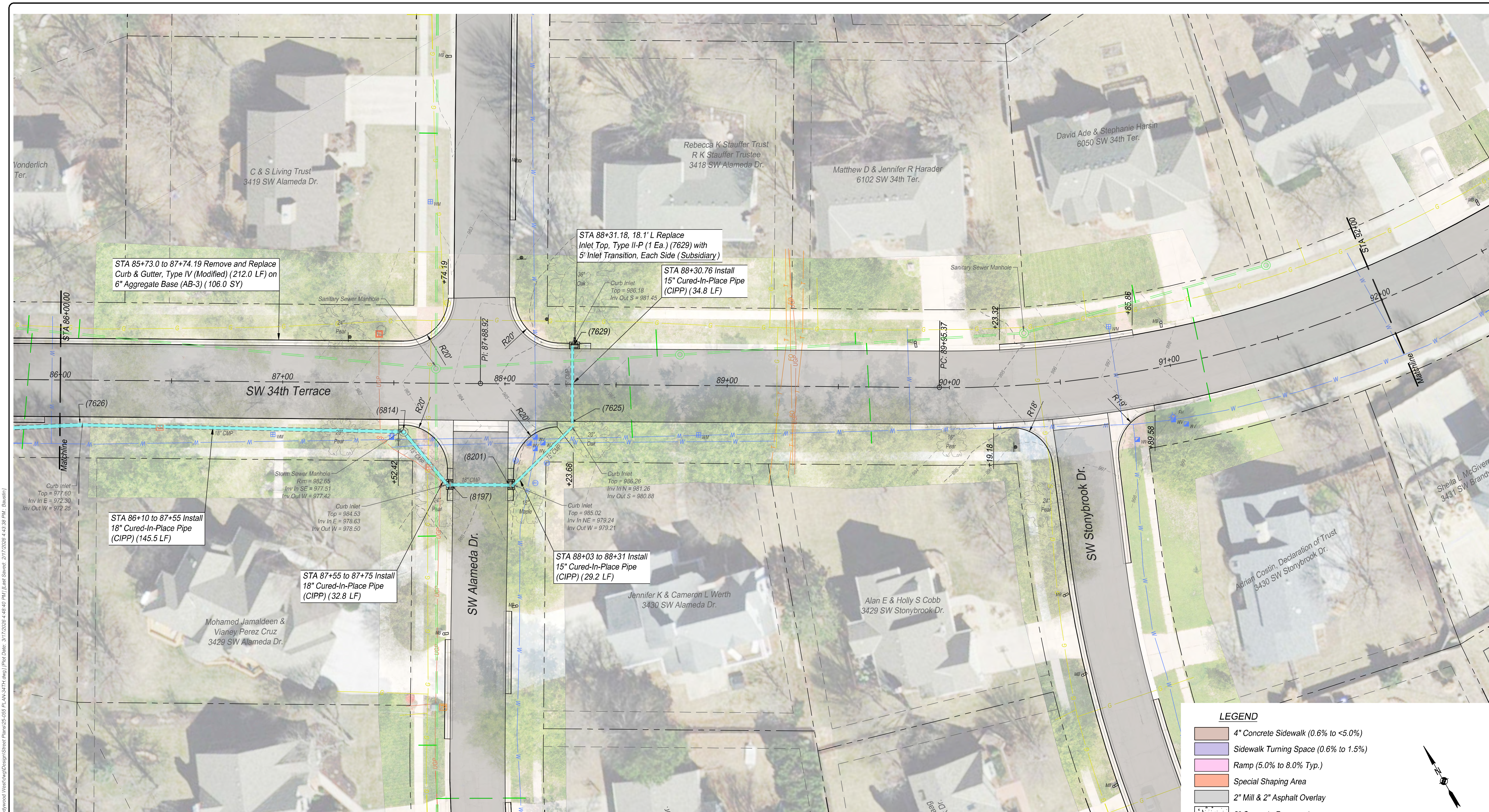

SBB
 ENGINEERING
 SBB Engineering, LLC
 101 S Kansas Ave., Topeka, KS 66603
 Ph: (785) 215-8630 www.sbbeng.com

Shadywood West
 Neighborhood Project,
 841098.05 and 501125.03

SW 34th Terrace

DATE: 3/17/2026
 SHEET: 15 OF 34
 PROJ.: 841098.05
 501125.03

SBB PROJ. NO. 25-055



File Location: X:\11 SBB Drawings\2022\25-055-Shadywood West\Drawings\Street Plans\25-055 SW 34th Terrace.dwg | Plot Date: 3/17/2026 4:48:40 PM | Last Saved: 2/17/2026 4:43:38 PM (Baustin)

LEGEND

- 4" Concrete Sidewalk (0.6% to <5.0%)
- Sidewalk Turning Space (0.6% to 1.5%)
- Ramp (5.0% to 8.0% Typ.)
- Special Shaping Area
- 2" Mill & 2" Asphalt Overlay
- 8" Concrete Pavement
- 6" Concrete Driveway
- Asphalt Pavement Patching

SBB PROJ. NO. 25-055

NO.	DATE	REVISION	BY	APP'D

DRAWN BY: L. O'CONNOR
 APP'D BY: B. AUSTIN
 FIELD BOOKS: -
 SURVEYED BY: SBB ENG.

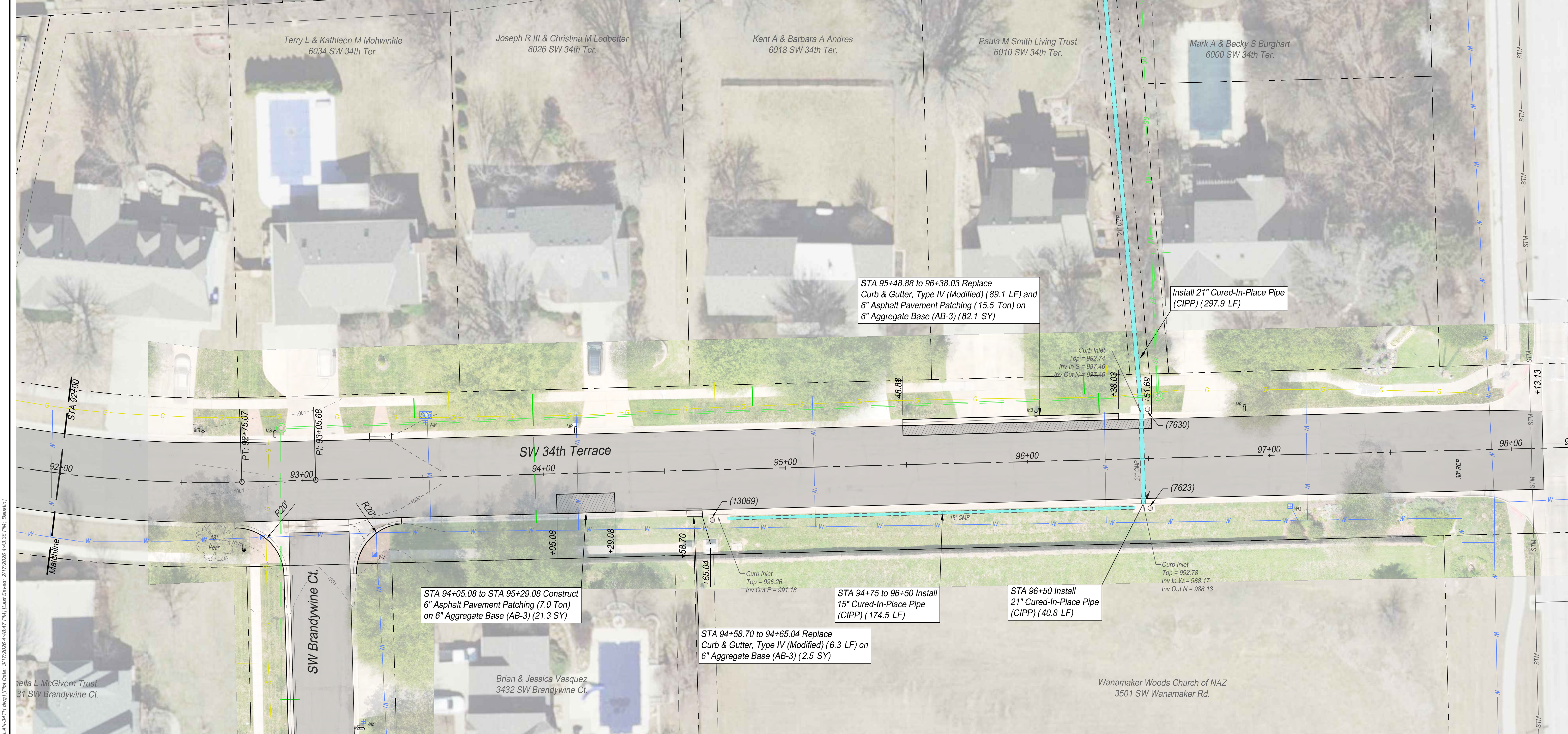
TOPEKA
 Public Works
 ENGINEERING
 620 SE MADISON St. • 2nd Floor • TOPEKA, KS 66607
 Phone: (785) 368-3842 • Fax: (785) 368-3881

SBB
 ENGINEERING
 SBB Engineering, LLC
 101 S Kansas Ave., Topeka, KS 66603
 Ph: (785) 215-8630 www.sbbeng.com

Shadywood West
 Neighborhood Project,
 841098.05 and 501125.03

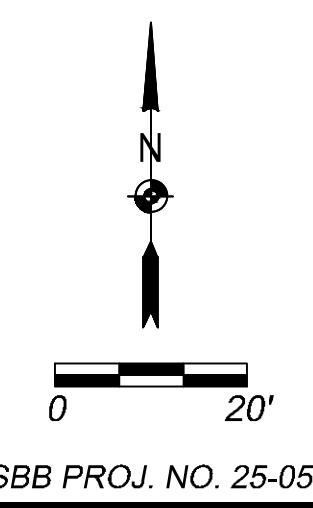
SW 34th Terrace

DATE: 3/17/2026
 SHEET: 16 OF 34
 PROJ.: 841098.05
 501125.03



File Location: X:\11 SBB Drawings\10-2022\25-055-Shadywood West\Drawings\Street Plans\25-055-PLAN-34TH.dwg | Plot Date: 3/17/2026 4:48:47 PM | Last Saved: 2/17/2026 4:43:38 PM (Baustin)

- LEGEND**
- 4" Concrete Sidewalk (0.6% to <5.0%)
 - Sidewalk Turning Space (0.6% to 1.5%)
 - Ramp (5.0% to 8.0% Typ.)
 - Special Shaping Area
 - 2" Mill & 2" Asphalt Overlay
 - 8" Concrete Pavement
 - 6" Concrete Driveway
 - Asphalt Pavement Patching



NO.	DATE	REVISION	BY	APP'D

DRAWN BY: L. O'CONNOR
 APP'D BY: B. AUSTIN
 FIELD BOOKS: -
 SURVEYED BY: SBB ENG.

TOPEKA
 Public Works
 ENGINEERING
 620 SE MADISON St. • 2nd Floor • TOPEKA, KS 66607
 Phone: (785) 368-3842 • Fax: (785) 368-3881

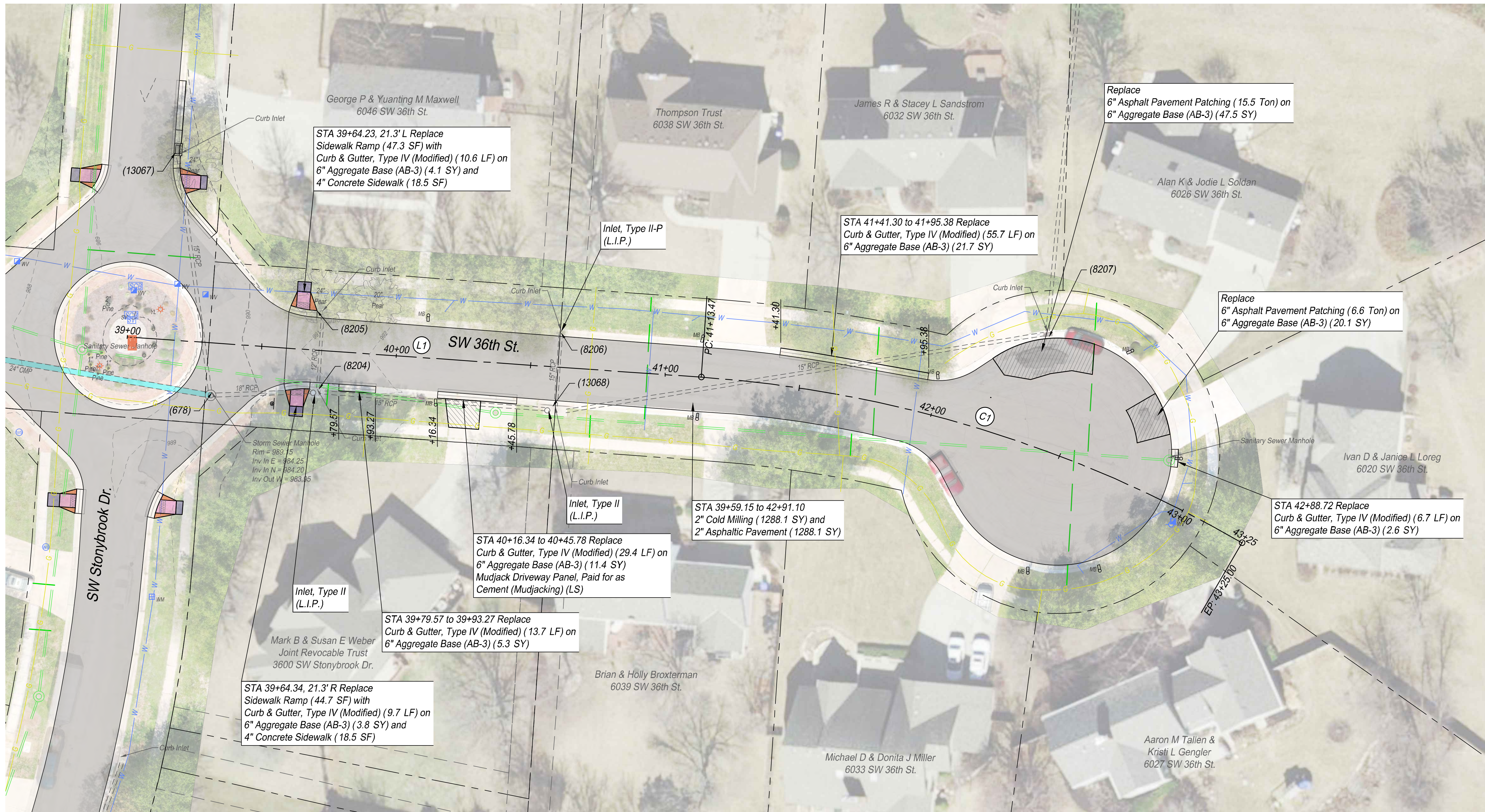
SBB
 ENGINEERING
 SBB Engineering, LLC
 101 S Kansas Ave., Topeka, KS 66603
 Ph: (785) 215-8630 www.sbbeng.com

Shadywood West
 Neighborhood Project,
 841098.05 and 501125.03

SW 34th Terrace

DATE: 3/17/2026
 SHEET: 17 OF 34
 PROJ.: 841098.05
 501125.03

SBB PROJ. NO. 25-055

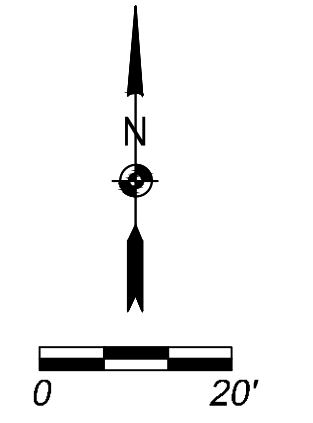


File Location: X:\11 SBE Drawings\2022\25-055-Shadywood West\Drawings\Street Plans\25-055 SW 36th.dwg | Plot Date: 3/17/2026 4:49:37 PM | Last Saved: 2/17/2026 4:12:27 PM (Baustin)

SW 36th Street (Alignment Control)					
ID	Begin Station	End Station	Begin Coordinates	End Coordinates	Curve Info
L1	39+00.00	41+13.47	N: 251551.21 E: 1947264.14	N: 251536.26 E: 1947477.08	
C1	PC: 41+13.47	PT: 43+25.00	PC: N: 251536.26 E: 1947477.08	PT: N: 251474.84 E: 1947677.60	L: 211.53' T: 107.62' R: 465.57' Δ: 26°01'56" C: 209.72'

LEGEND

- 4" Concrete Sidewalk (0.6% to <5.0%)
- Sidewalk Turning Space (0.6% to 1.5%)
- Ramp (5.0% to 8.0% Typ.)
- Special Shaping Area
- 2" Mill & 2" Asphalt Overlay
- 8" Concrete Pavement
- 6" Concrete Driveway
- Asphalt Pavement Patching



SBB PROJ. NO. 25-055

NO.	DATE:	REVISION	BY:	APPD

DRAWN BY: L. O'CONNOR
 APP'D BY: B. AUSTIN
 FIELD BOOKS: -
 SURVEYED BY: SBB ENG.

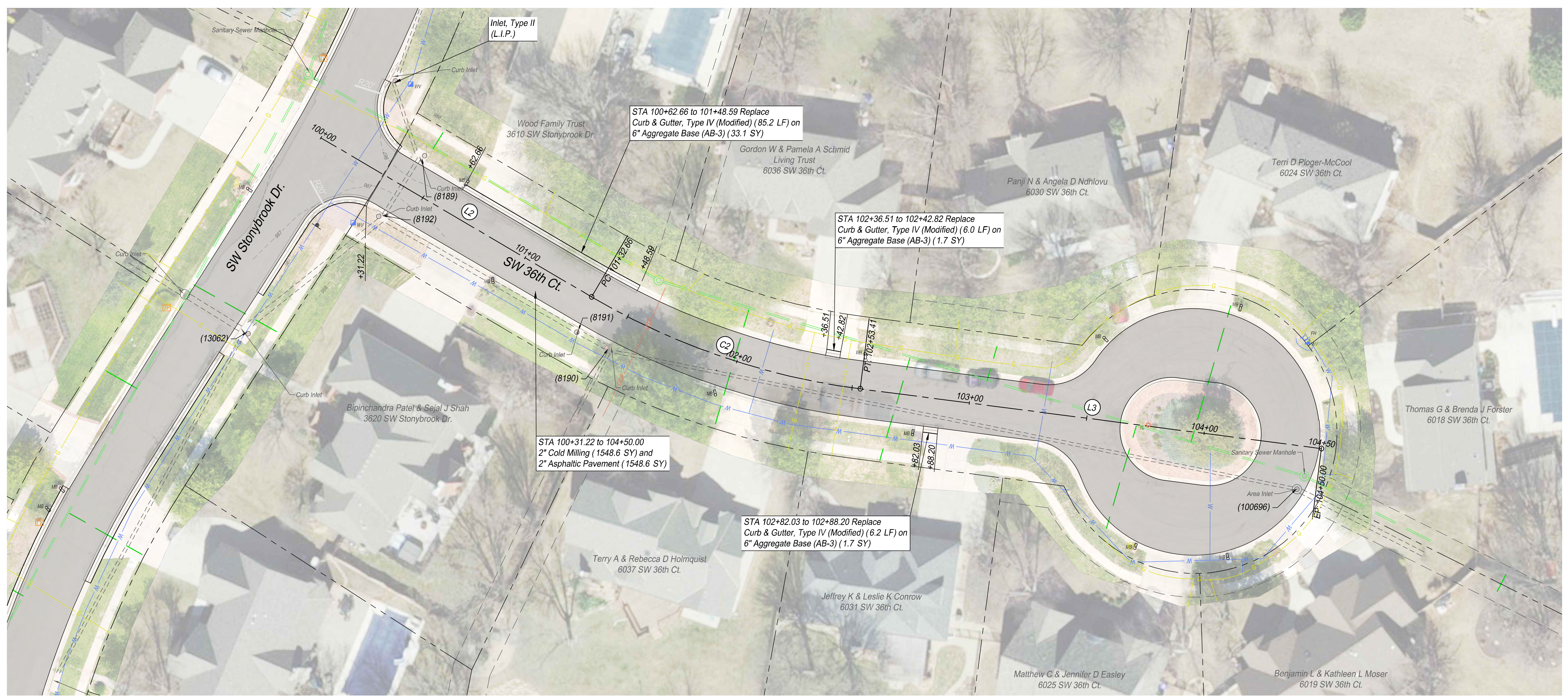
620 SE MADISON St. • 2nd Floor • TOPEKA, KS 66607
 Phone: (785) 368-3842 • Fax: (785) 368-3881

SBB Engineering, LLC
 101 S Kansas Ave., Topeka, KS 66603
 Ph: (785) 215-8630 www.sbbeng.com

**Shadywood West
 Neighborhood Project,
 841098.05 and 501125.03**

SW 36th Street

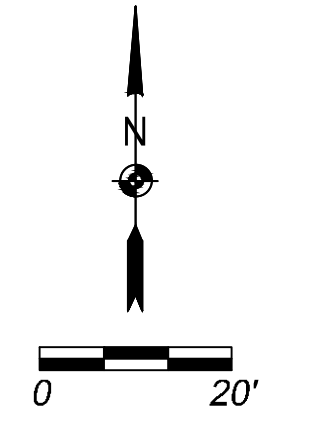
DATE:	3/17/2026
SHEET:	18 OF 34
PROJ.:	841098.05 501125.03



File Location: X:\11 SBE Drawings\2022\25-055-Shadywood West\Drawings\Street Plans\25-055 SW 36TH.dwg | Plot Date: 3/17/2026 4:48:43 PM | Last Saved: 2/17/2026 4:12:27 PM (Austin)

SW 36th Court (Alignment Control)					
ID	Begin Station	End Station	Begin Coordinates	End Coordinates	Curve Info
L2	100+00.00	101+32.66	N: 251256.19 E: 1947190.64	N: 251189.00 E: 1947305.02	
C2	PC: 101+32.66	PT: 102+53.41	PC: N: 251189.00 E: 1947305.02	PT: N: 251150.14 E: 1947418.49	L: 120.75' T: 61.21' R: 300.00' Δ: 23°03'44" C: 119.94'
L3	102+53.41	104+50.00	N: 251150.14 E: 1947418.49	N: 251124.92 E: 1947613.45	

- LEGEND**
- 4" Concrete Sidewalk (0.6% to <5.0%)
 - Sidewalk Turning Space (0.6% to 1.5%)
 - Ramp (5.0% to 8.0% Typ.)
 - Special Shaping Area
 - 2" Mill & 2" Asphalt Overlay
 - 8" Concrete Pavement
 - 6" Concrete Driveway
 - Asphalt Pavement Patching



SBB PROJ. NO. 25-055

NO.	DATE	REVISION	BY	APPD

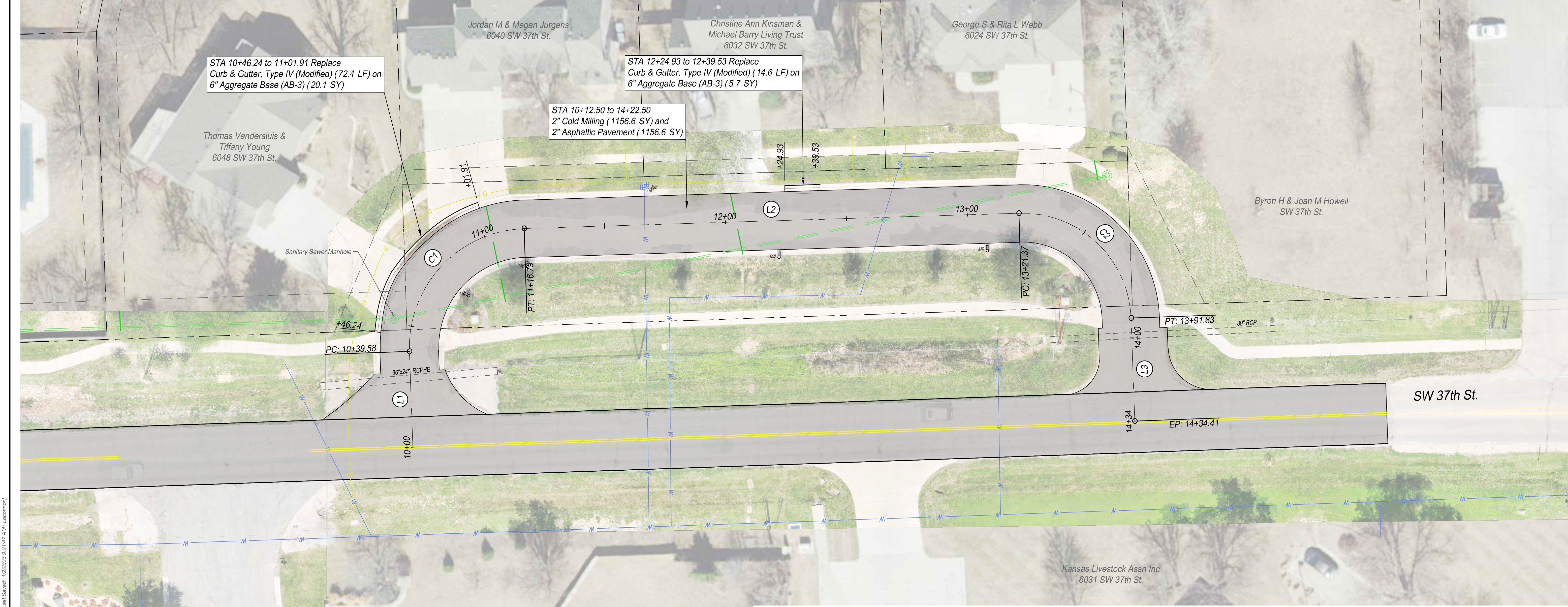
DRAWN BY: L. O'CONNOR
 APP'D BY: B. AUSTIN
 FIELD BOOKS: -
 SURVEYED BY: SBB ENG.



Shadywood West
 Neighborhood Project,
 841098.05 and 501125.03

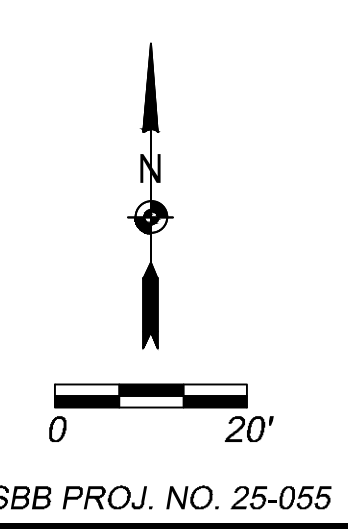
SW 36th Court

DATE: 3/17/2026
 SHEET: 19 OF 34
 PROJ.: 841098.05
 501125.03



SW 37th Street (Alignment Control)					
ID	Begin Station	End Station	Begin Coordinates	End Coordinates	Curve Info
L1	10+00.00	10+39.58	N: 250666.72 E: 1947347.64	N: 250706.27 E: 1947346.22	
C1	PC: 10+39.58	PT: 11+16.79	PC: N: 250706.27 E: 1947346.22	PT: N: 250757.01 E: 1947393.66	L: 77.21' T: 49.24' R: 49.00' Δ: 90°16'54" C: 69.47'
L2	11+16.79	13+21.37	N: 250757.01 E: 1947393.66	N: 250763.37 E: 1947598.14	
C2	PC: 13+21.37	PT: 13+91.83	PC: N: 250763.37 E: 1947598.14	PT: N: 250720.01 E: 1947644.51	L: 70.46' T: 44.78' R: 45.00' Δ: 89°43'06" C: 63.48'
L3	13+91.83	14+34.41	N: 250720.01 E: 1947644.51	N: 250677.46 E: 1947646.05	

- LEGEND**
- 4" Concrete Sidewalk (0.6% to <5.0%)
 - Sidewalk Turning Space (0.6% to 1.5%)
 - Ramp (5.0% to 8.0% Typ.)
 - Special Shaping Area
 - 2" Mill & 2" Asphalt Overlay
 - 8" Concrete Pavement
 - 6" Concrete Driveway
 - Asphalt Pavement Patching



File Location: X:\11 SBB Drawings\10-2022\25-055-Shadywood West\Drawings\Street Plans\25-055-PLAN-SW37TH.dwg | Plot Date: 3/17/2026 4:50:08 PM | Last Saved: 1/2/2026 9:21:47 AM | Locomot

NO.	DATE	REVISION	BY	APP'D

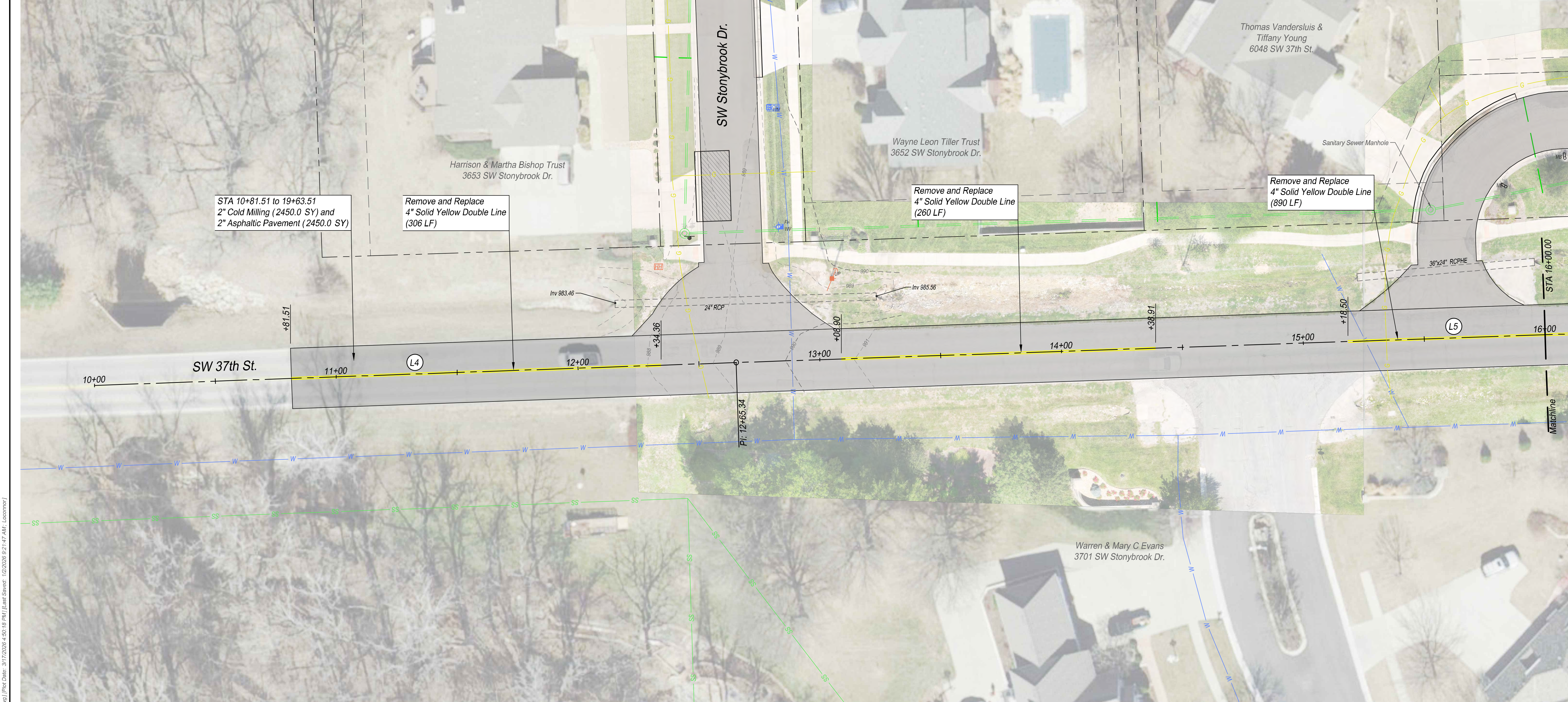
DRAWN BY: L. O'CONNOR
 APP'D BY: B. AUSTIN
 FIELD BOOKS: -
 SURVEYED BY: SBB ENG.



Shadywood West
 Neighborhood Project,
 841098.05 and 501125.03

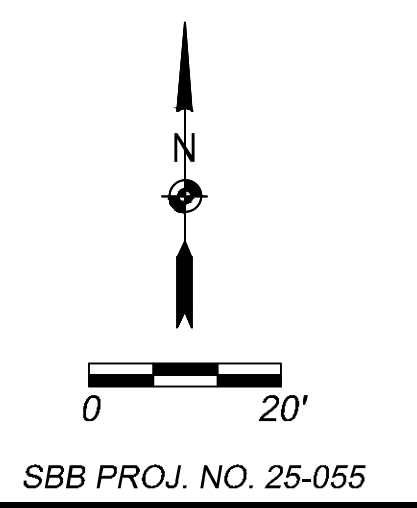
SW 37th Street

DATE: 3/17/2026
 SHEET: 20 OF 34
 PROJ.: 841098.05
 501125.03



SW 37th Street (OLD) (Alignment Control)					
ID	Begin Station	End Station	Begin Coordinates	End Coordinates	Curve Info
L4	10+00.00	12+65.34	N: 250647.10 E: 1946787.30	N: 250656.56 E: 1947052.47	
L5	12+65.34	18+59.28	N: 250656.56 E: 1947052.47	N: 250676.94 E: 1947646.06	
L6	18+59.28	20+33.58	N: 250676.94 E: 1947646.06	N: 250683.19 E: 1947820.25	

- LEGEND**
- 4" Concrete Sidewalk (0.6% to <5.0%)
 - Sidewalk Turning Space (0.6% to 1.5%)
 - Ramp (5.0% to 8.0% Typ.)
 - Special Shaping Area
 - 2" Mill & 2" Asphalt Overlay
 - 8" Concrete Pavement
 - 6" Concrete Driveway
 - Asphalt Pavement Patching



SBB PROJ. NO. 25-055

NO.	DATE	REVISION	BY	APP'D

DRAWN BY: L. O'CONNOR
 APP'D BY: B. AUSTIN
 FIELD BOOKS: -
 SURVEYED BY: SBB ENG.



Shadywood West
 Neighborhood Project,
 841098.05 and 501125.03

SW 37TH STREET

DATE: 3/17/2026
 SHEET: 21 OF 34
 PROJ.: 841098.05
501125.03

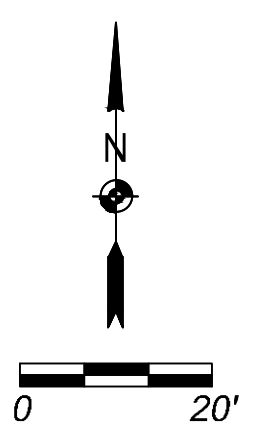
File Location: X:\11 SBB Drawings\10-2025-055-Shadywood West\Drawings\Street Plans\25-055 PLAN-37TH.dwg | Plot Date: 3/17/2026 4:50:18 PM | Last Saved: 1/2/2026 9:21:47 AM | Location:



[File Location: X:\11 SBE Drawings\10-2022\25-055-Shadywood West\Drawings\Street Plans\25-055 PL AN-37th.dwg] [Plot Date: 3/17/2026 4:50:22 PM] [Last Saved: 1/2/2026 9:21:47 AM - Locomotor]

LEGEND

- 4" Concrete Sidewalk (0.6% to <5.0%)
- Sidewalk Turning Space (0.6% to 1.5%)
- Ramp (5.0% to 8.0% Typ.)
- Special Shaping Area
- 2" Mill & 2" Asphalt Overlay
- 8" Concrete Pavement
- 6" Concrete Driveway
- Asphalt Pavement Patching



SBB PROJ. NO. 25-055

NO.	DATE	REVISION	BY	APP'D

DRAWN BY: L. O'CONNOR
 APP'D BY: B. AUSTIN
 FIELD BOOKS: -
 SURVEYED BY: SBB ENG.

TOPEKA
 Public Works
 ENGINEERING
 620 SE MADISON St. • 2nd Floor • TOPEKA, KS 66607
 Phone: (785) 368-3842 • Fax: (785) 368-3881

SBB
 ENGINEERING
 SBB Engineering, LLC
 101 S Kansas Ave., Topeka, KS 66603
 Ph: (785) 215-8630 www.sbbeng.com

**Shadywood West
 Neighborhood Project,
 841098.05 and 501125.03**

SW 37th Street

DATE: 3/17/2026
 SHEET: 22 OF 34
 PROJ.: 841098.05
501125.03